

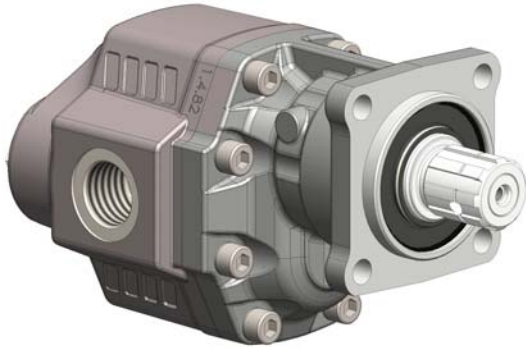
POMPE AD INGRANAGGI REVERSIBILI FISSAGGIO 4 FORI-ISO

CODICE FAMIGLIA
FAMILY CODE

105-028

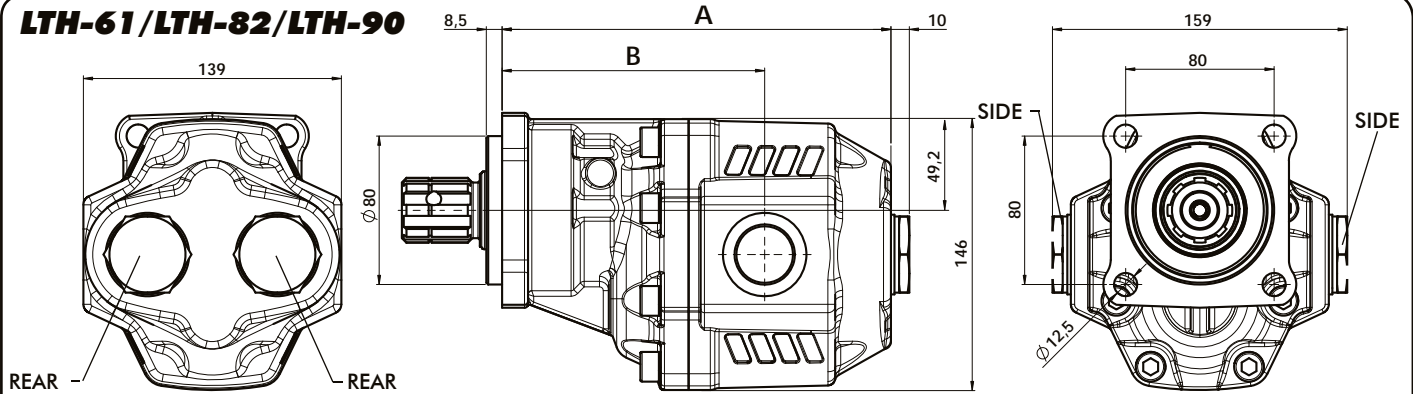
4 HOLES-ISO REVERSIBLE HYDRAULIC GEAR PUMPS

LTH ISO

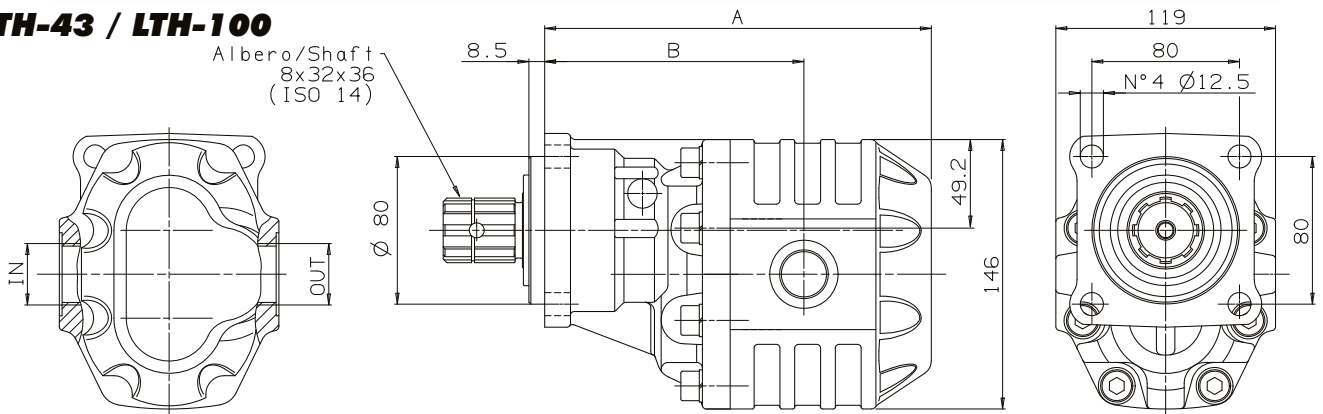


Fluido idraulico Fluid	Minerale o sintetico compatibile con guarnizioni: Mineral or synthetic compatible with the following seals: NBR, FKM, FPM, Nylon				
Viscosità cinematica consigliata Kinematic viscosity suggested	T media ambiente (°C) Average ambient temp. (°C)	< -10	-10 ÷ 10	10 ÷ 35	> 35
	VG (cSt = mm ² /s)	22	32	46	68
Viscosità cinematica ottimale di esercizio Optimale kinematic viscosity			VG = 10 cSt ÷ 100 cSt		
Viscosità cinematica max consentita all'avviamento Max kinematic viscosity suggested at the start-up			VG = 750 cSt		
Indice di viscosità consigliato Viscosity index suggested	VI > 100	Temperatura di esercizio Working temperature			
		-15°C +100°C			
Grado di filtrazione Oil filtering			> 200 bar: 10 µm < 200 bar: 25 µm		
Pressione di aspirazione/Inlet pressure			-0,3 ÷ 2 bar		
Senso di rotazione/Pump rotation			Bidirezionale Bidirectional		

LTH-61 / LTH-82 / LTH-90



LTH-43 / LTH-100



Tipo pompa Pump type	Codice ordinazione Order code	SIDE ISO 228	REAR ISO 228	A mm	B mm	Peso Weight Kg
LTH-43	105-028-10432	G 3/4		185,5	130	14,3
LTH-61	105-028-10610	G 1		196,5	136,5	15,3
LTH-82	105-028-10825			209,5	140,5	16,3
LTH-90	105-028-10905	G 1 1/4	G 1	211	149	17,3
LTH-100	105-028-11002	G 1 1/4		226,5	154,5	15,8

Kit guarnizioni / Seal Kit

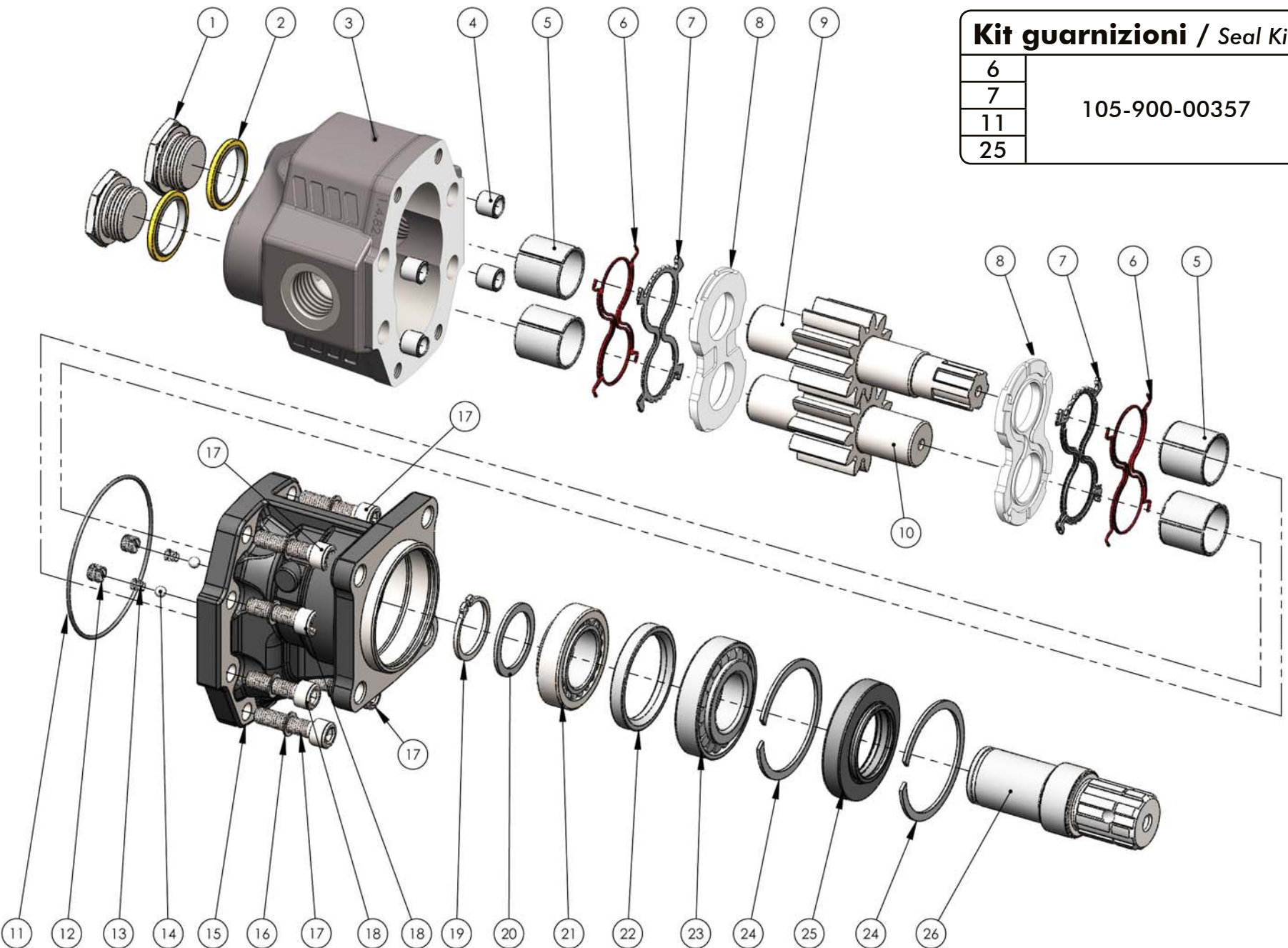
6

7

11

25

105-900-00357

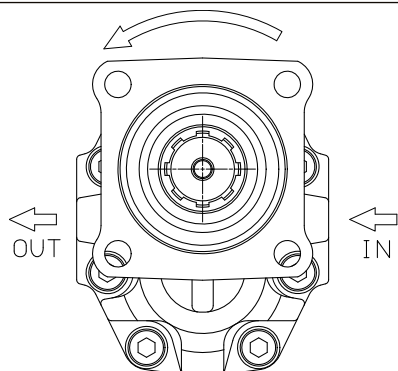
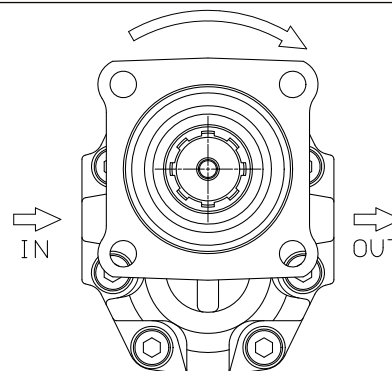
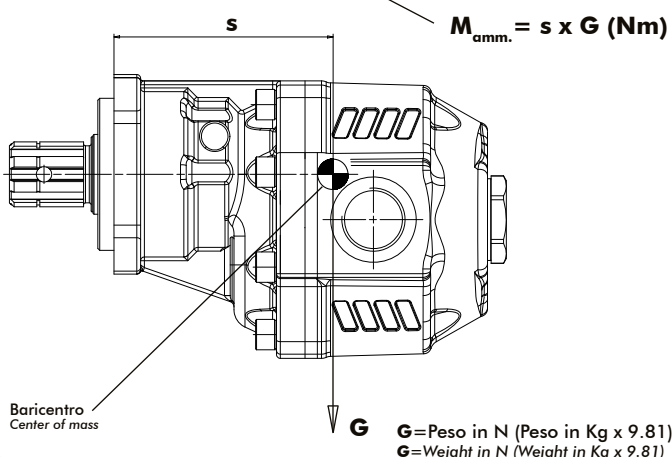


CARATTERISTICHE TECNICHE DI FUNZIONAMENTO**TECHNICAL FEATURES**

Tipo pompa Pump type	Cilindrata Displacement cm ³ /rev	Pressione Pressure			Velocità max. continua Max. continuous speed rpm	Velocità max. intermittente Max. intermittent speed rpm	Velocità min. Min. speed rpm
		P1 bar	P2 bar	P3 bar			
LTH-43	43,12	230	240	250	1700	2250	300
LTH-61	60,06	190	200	210	1500	1800	
LTH-82	81,08	160	180	190	1400	1700	
LTH-90	90,43						
LTH-100	98,18						

P1 = Pressione max. continua
P2 = Pressione max. intermittente
P3 = Pressione max. di punta

Max. continuous pressure (100%)
Max. Intermittent pressure (20 sec. max.)
Max. peak pressure (6 sec. max.)

CARATTERISTICHE TECNICHE DI FUNZIONAMENTO - TECHNICAL FEATURES**Rotazione antioraria, pompa sinistra**
Anti-clockwise rotation, left pumpVista FRONTALE
FRONT**Rotazione oraria, pompa destra**
Clockwise rotation, right pumpVista FRONTALE
FRONT**MOMENTO PESO / MASS MOMENT**

Tipo pompa - Pump type	S
LTH-43	105
LTH-61	109
LTH-82	117
LTH-90	120
LTH-100	125